




Every Word Counts

1.0 Installation Process

1. Insert the Installation CD. The *Software Installer* screen will appear.
2. Follow the software installation dialog boxes
3. The *Installation Wizard* gives you the link to install the *Microsoft Tablet PC Recognizer* by directing you to the Microsoft website (for Windows XP Pro). This option will enable you to convert handwriting to digital text. Windows Vista users already have handwriting conversion capabilities pre-installed (not including Vista home basic).

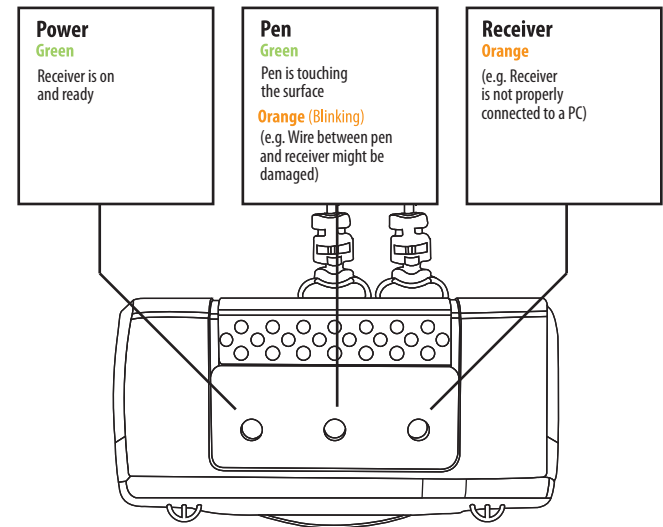


Congratulations, you have successfully installed the *Pen&Ink* application.

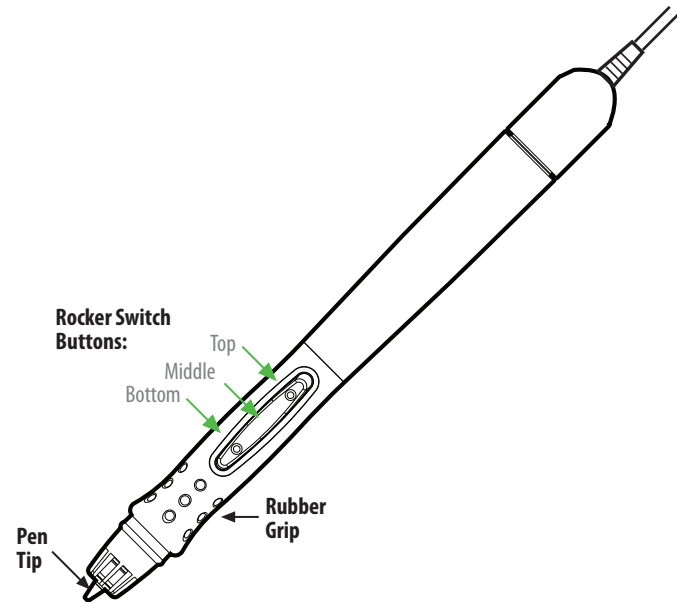
Notice the icon in the notification area that indicates you are in mouse mode 

2.0 The Devices - Close up

Now that your *Wired Digital Pen & Mouse* is ready, please take a moment to familiarize yourself with its various parts, in particular the receiver LED indication symbols.

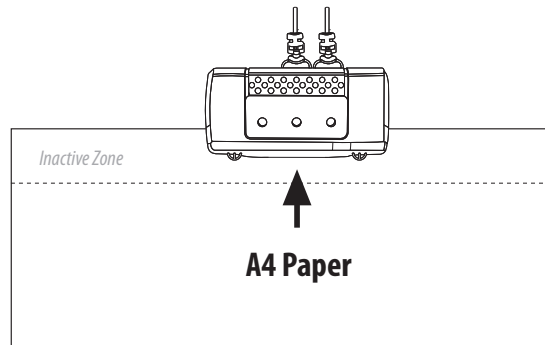


The Digital Pen



3.0 Working with the Digital Pen

- Clip the Receiver onto the top center of an A4 page.
- Attach the receiver to the paper by pressing the back side of the clip, and inserting the paper between the receiver and the clip. Release the clip so that it firmly holds the paper.
 - The receiver can be clipped in various positions / orientations on the paper. Please refer to the Device Properties in the User Guide.



Package Contents:

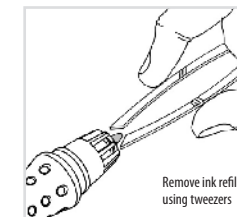
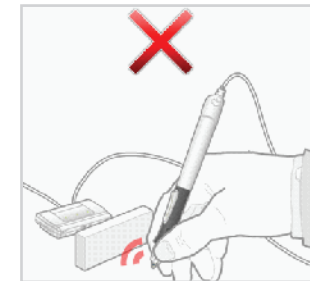
- Wired Digital Pen & Mouse
- Installation CD
- Quick User Guide

Quick User Guide

Copyright © 2002-2009 EPOS. All rights reserved. This document may not be reproduced without the prior written consent of EPOS. EPOS reserves the right to modify this document and/or the related products from time to time without notice. The trademarks and service marks of EPOS may not be used without the prior written consent of EPOS.

P/N DOC10001 REV A02

While writing, make sure the line of sight between the Pen and the Receiver remains clear. Keep your fingers away from the crystal cone at the lower most part of the pen. (see drawing below)



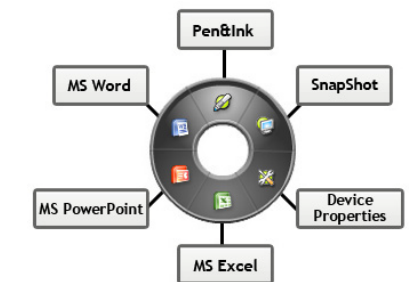
Replacing the ink refill

- To replace the ink cartridge*, pull on the tip to remove the used cartridge.
- Insert a new cartridge instead.

* Standard Mini Ballpoint ink refill

3.1 Accessing Digital Pen Applications

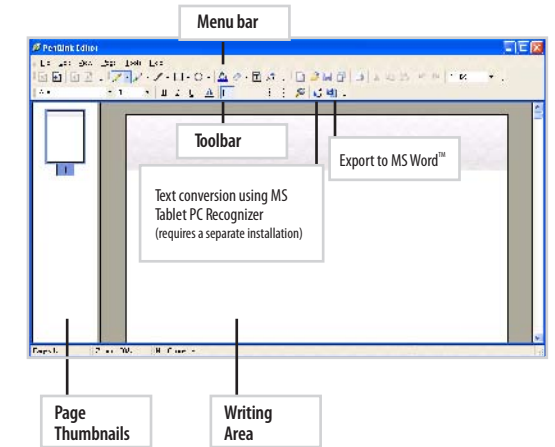
All EPOS compliant applications are accessible from the navigation wheel. Press and hold the middle button on the pen rocker switch to open the navigation wheel on your PC. You must keep this button pressed while choosing an application within the navigation wheel. To select one of the applications on the navigation wheel, simply place the cursor over the application icon on the navigation wheel and remove your finger from the middle button.



3.2 EPOS Compliant Applications

Pen & Ink Editor

The Pen&Ink Editor application is the main software component of the EPOS Digital Pen. It is easy to use and enables you to quickly "write" messages, draw pictures and make notes, as you would with a standard pen.



For More information see the **User Guide**. You can find the **User Guide** from **Pen&Ink > Help > Help Content (F1)**

Using the Digital Pen with Microsoft Office® Applications

The Digital Pen combined with mouse functionality lets you write directly into Microsoft Windows Vista™ and Microsoft Office® 2003/2007 's applications.

Now you can start annotating and adding handwritten remarks directly into your documents, presentations and e-mails using Outlook®, Word®, Excel® and PowerPoint®. Pen settings are controlled through the Pen&Mouse Toolbar.

For pen activation and deactivation, press the on/off icons:



Snap Shot

The Snap Shot application takes a snapshot of your screen, upon which you can then write comments and annotate with your Digital Pen.

Device Properties

Advanced users can customize the device settings in several possible areas: Hardware Receiver / Mouse / Custom Wheel Applications.

For More information see the **User Guide**. You can find the **User Guide** from **Pen&Ink > Help > Help Content (F1)**

EPOS compliant applications can also be opened as follows:

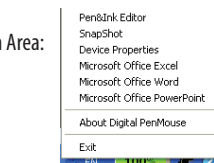
1. From the Desktop:



2. From the Start menu:



3. From the Notification Area:



You can quickly toggle back and forth between Pen and Mouse mode on the Digital Pen by pressing the middle button on the pen while working with EPOS compliant applications.

3.3 For use as a Mouse

The Digital Pen also acts as a mouse. The default button configuration is as follows :

- Press the top button for a mouse *right click*.
- Press the bottom button for a mouse *left click*.

- You may also use the left click by tapping the pen tip directly on the surface

For more information on the mouse configuration, please refer to the *Device Properties* chapter in the User Guide.